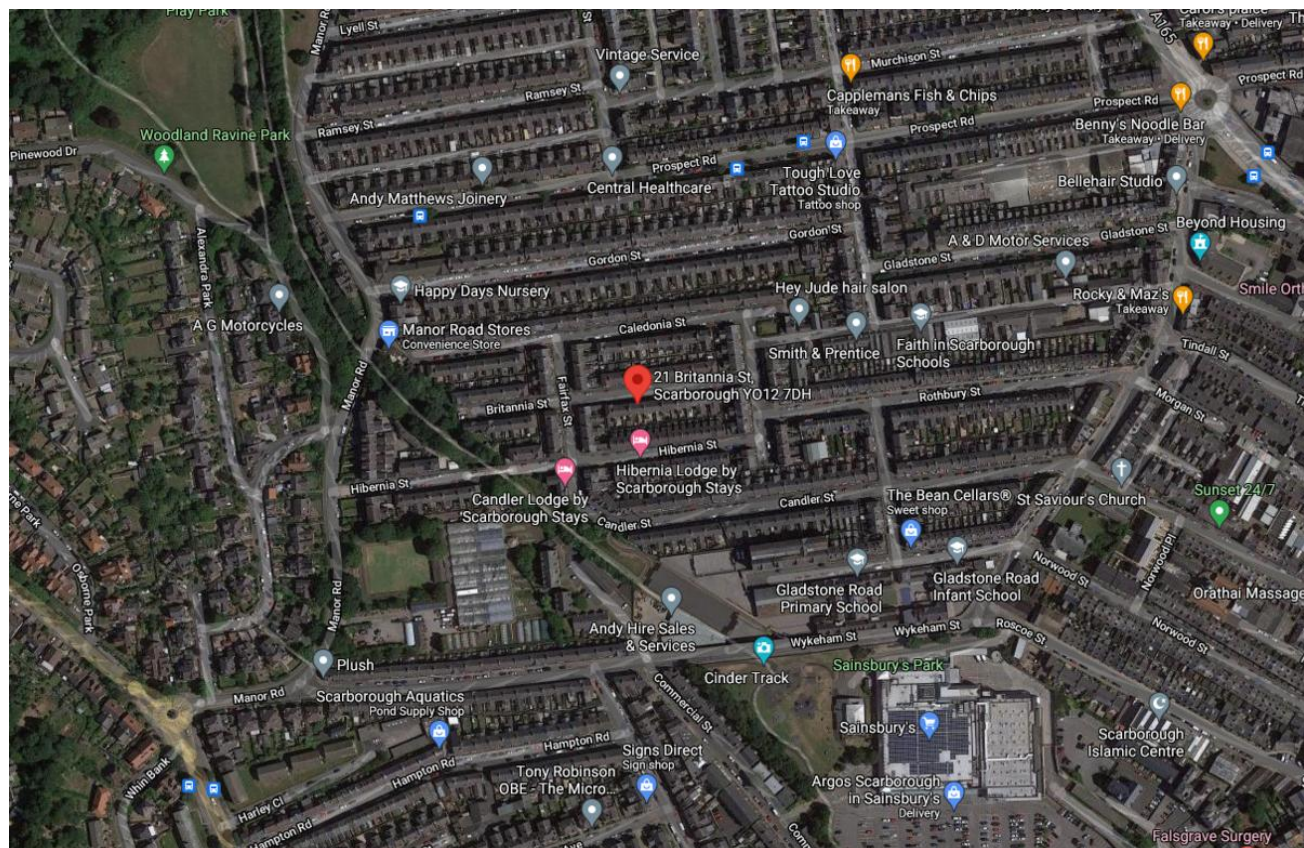


21 Britannia Street, Scarborough

£150,000



Full EPC information available on request.

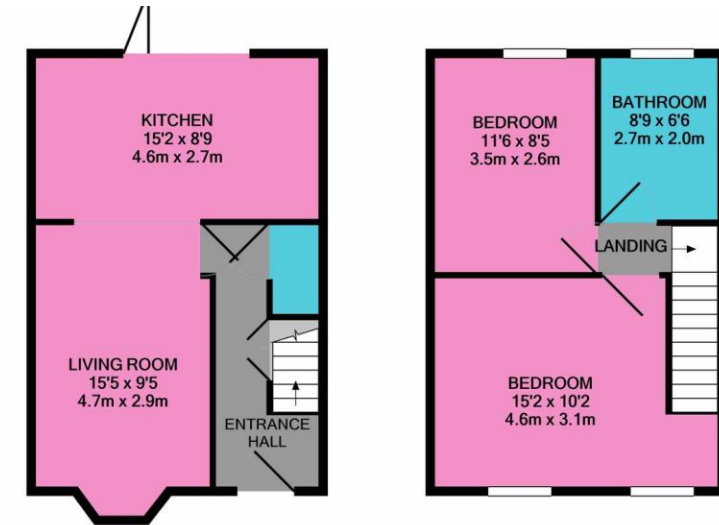
- Fully renovated and refurbished
- Open plan dining kitchen and lounge
- Downstairs WC
- 2 Double bedrooms
- 4 piece contemporary bathroom
- Gas CH - boiler & pipework 2020
- DG windows - replaced 2020
- Fully rewired 2020

Please note that under the Property Misdescriptions Act 1991 we have endeavoured to make these particulars as reliable and accurate as possible but their accuracy is not guaranteed and they do not form part of any contract as they are prepared as a general guide. We have not carried out a detailed survey or tested any of the appliances, services or specific fittings. Room sizes should not be relied upon for carpets and furnishings. Internal photographs are intended as a guide only and it should not be assumed that any furniture/fittings are included in the sale. Where shown details of the lease, ground rent and service charge have been provided by the vendor and their accuracy cannot be guaranteed. The buyer is advised to obtain verification from their Solicitor or Surveyor.



WOW! Proud to present probably the best renovation and refurbishment we've seen in Scarborough. 2 BEDROOM MID TERRACE that has been FULLY RENOVATED THROUGHOUT resulting in a STUNNING HOME.

This beautiful home briefly comprises of an entrance hallway, downstairs cloakroom with 2 piece white suite. The lounge is spacious with reclaimed wooden floorboards throughout the ground floor. The dining kitchen has been fitted with an extensive range of dark blue units finished with gold handles and topped with a marbled quartz worktop. The kitchen benefits from an integrated dishwasher, washing machine, fridge freezer, 5 ring gas hob, conventional oven and combined microwave oven. Bi fold doors open onto the impressive tiered private garden space with the upper terrace being decked while the lower terrace has a brick paved south facing patio. To the first floor is the master bedroom with built in wardrobe and the second double sized bedroom. The contemporary 4 piece bathroom comprises of a free standing bath, large walk in shower toilet and vanity sink. The home has plantation shutters throughout along with reproduction cast iron radiators. The ground floor has reclaimed wooden floorboards whilst the stairs and bedrooms benefit from stylish jute flooring.



GROUND FLOOR
APPROX. FLOOR
AREA 350 SQ.FT.
(32.5 SQ.M.)

1ST FLOOR
APPROX. FLOOR
AREA 344 SQ.FT.
(32.0 SQ.M.)

TOTAL APPROX. FLOOR AREA 694 SQ.FT. (64.5 SQ.M.)

Whilst every attempt has been made to ensure the accuracy of the floor plan contained here, measurements of doors, windows, rooms and any other items are approximate and no responsibility is taken for any error, omission, or mis-statement. This plan is for illustrative purposes only and should be used as such by any prospective purchaser. The services, systems and appliances shown have not been tested and no guarantee as to their operability or efficiency can be given.

Made with Metropix ©2021